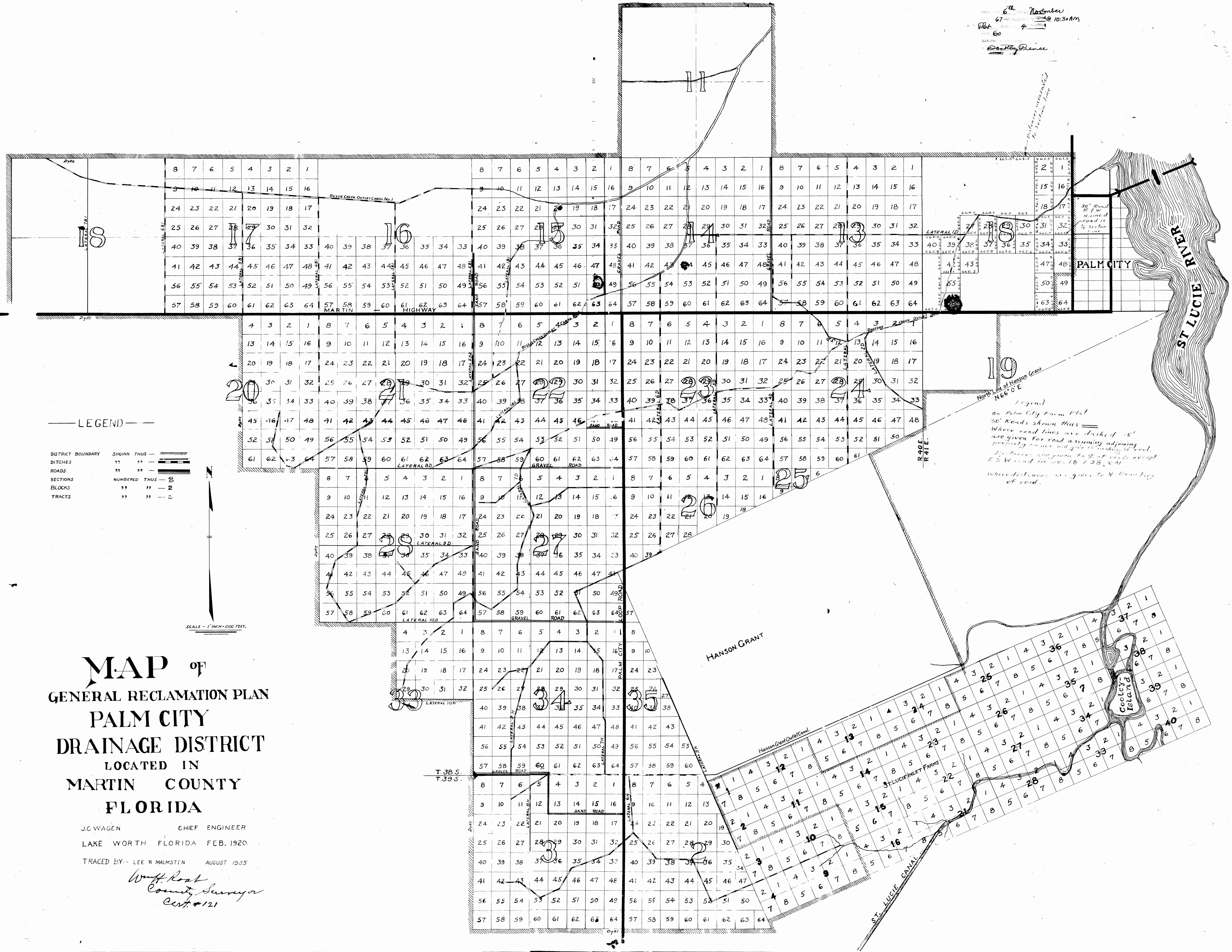


6<sup>th</sup> November  
 67 NO. 67  
 10:30 AM  
 4  
 60  
 D. H. P.  
 D. H. P.  
 D. H. P.



Legend  
 on Palm City Farm Plat  
 30' Roads shown thus ———  
 Where road lines are dashed 15'  
 are given for road assuming adjoining  
 property owner will give 15' making 30' road.  
 Distances are given to E. of roads except  
 E. W. road in sec. 18, 138, 541  
 where distances are given to N. boundary  
 of road.

— LEGEND —

- DISTRICT BOUNDARY SHOWN THUS —————
- DITCHES " " ————
- ROADS " " ————
- SECTIONS NUMBERED THUS — 2
- BLOCKS " " — 2
- TRACTS " " — 2

SCALE — 1" = 1000 FEET.

# MAP OF GENERAL RECLAMATION PLAN PALM CITY DRAINAGE DISTRICT LOCATED IN MARTIN COUNTY FLORIDA

J. C. WAGEN CHIEF ENGINEER  
 LAKE WORTH FLORIDA FEB. 1920.  
 TRACED BY — LEE R. MALMSTEN AUGUST 1935

*Wm. H. Root*  
 County Surveyor  
 Cert. #121